

# 1715 Redundant I/O

Bulletin 1715

## Features and Benefits

1715 redundant I/O is Rockwell Automation's first true redundant I/O platform and offers exceptional ease-of-use. It requires no user programming code or additional hardware to operate.

With support for both standard and extreme environments, 1715 I/O offers considerable flexibility, supporting multiple configurations and applications with a single product. It offers broad support for critical applications ranging from non-safety and both simplex and duplex configurations.

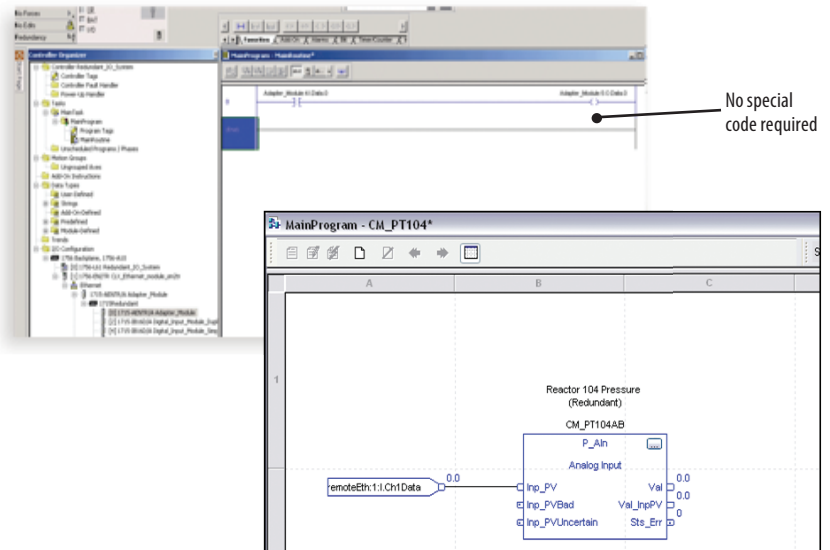
The 1715 platform also includes redundant Ethernet adapters for even greater fault-tolerant capabilities and includes premier diagnostic capabilities.

*Increase the availability of your most critical applications.*



## Exceptional Ease-Of-Use

Other I/O platforms can be difficult to use with redundant systems, requiring complex programming, Add-On Instructions (AOIs) and cross-wiring of inputs and outputs. 1715 redundant I/O requires no special wiring, and no user programming code or AOIs. It also requires less engineering since no additional hardware is required.

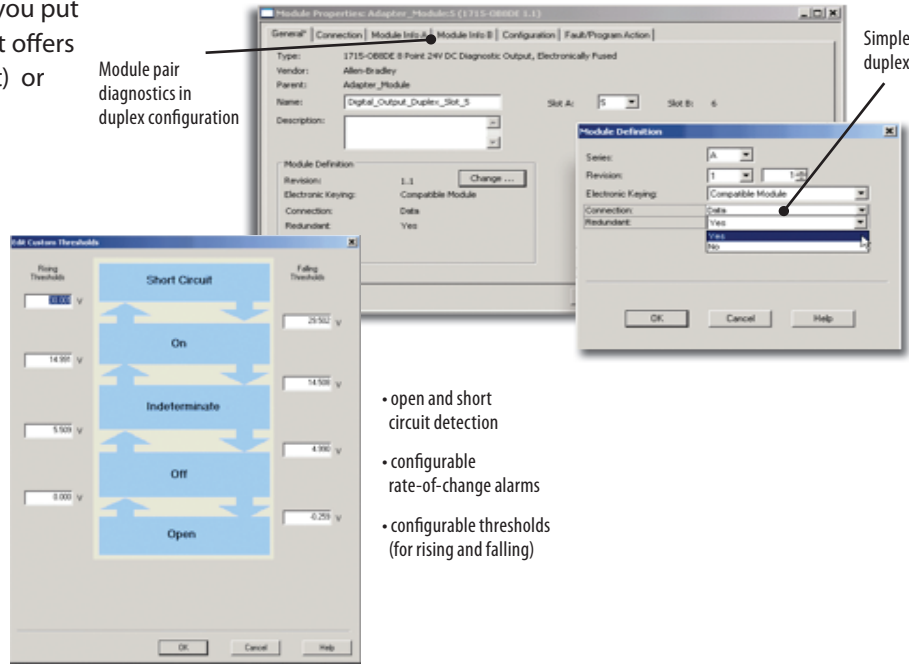


LISTEN.  
THINK.  
SOLVE.

Unlike other I/O platforms, 1715 I/O lets you put redundancy exactly where you need it. It offers the flexibility of simplex (non-redundant) or duplex (redundant) module operation.

Module pair diagnostics in duplex configuration

Simplex or duplex operation

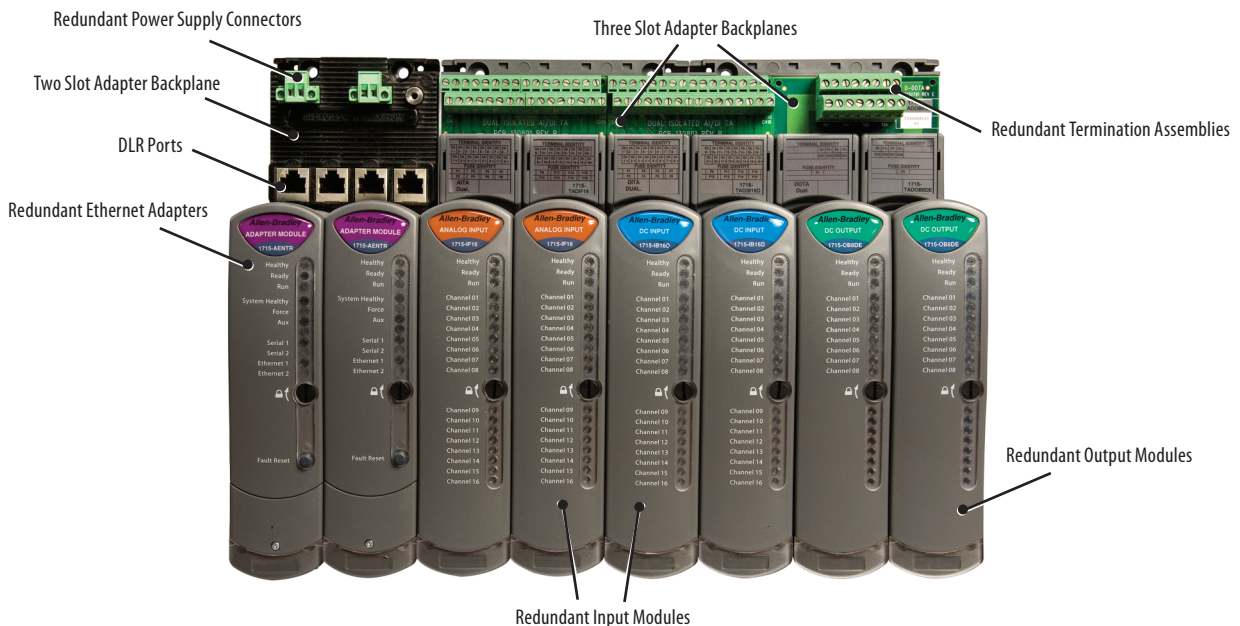
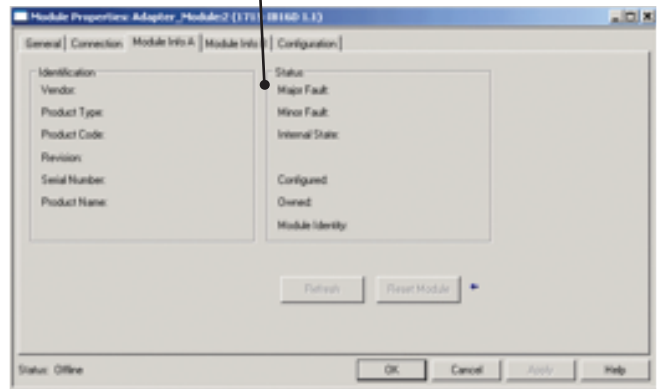


- open and short circuit detection
- configurable rate-of-change alarms
- configurable thresholds (for rising and falling)

## Premier Diagnostics

1715 redundant I/O modules offer native device intelligence in that they can monitor their own health with internal diagnostics. The modules perform multiple samples of a single signal using different criteria to alert you to potential issues, including open and short circuits, unexpected rate-of-change and thresholds.

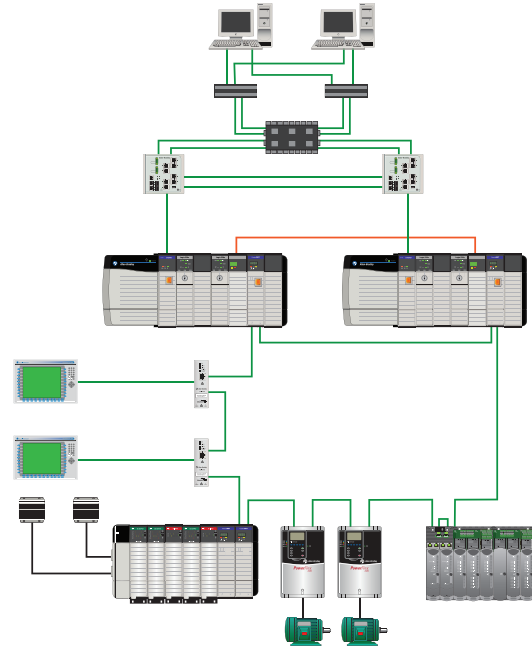
Modules monitor their own health with internal diagnostics



## Redundant Ethernet Adapters

DLR<sup>1</sup> and EtherNet/IP<sup>®</sup> I/O in redundant architectures integrate all levels of a system on a common fault-tolerant network that provides resiliency and requires no additional hardware to implement. 1715 fault-tolerant I/O provides redundant input and output modules and Ethernet adapters suitable for DLR topologies with no additional hardware or programming required.

<sup>1</sup> A Device Level Ring (DLR) topology lets you implement a ring topology that reduces cabling and associated costs and helps to minimize downtime by providing a redundant path so that machine operations can continue without interruption for longer periods.



## Flexible Configuration

1715 redundant I/O modules offer flexible configuration. You can make a single connection and the termination assembly takes care of splitting the signal to both modules. Suit your specific needs using simplex and duplex modules and termination assemblies.

Catalog Number	Description
1715-AENTR	Ethernet Adapter module
1715-IB16D	16 Channel Digital Input Module
1715-IF16	16 Channel Analog Input Module
1715-OB8DE	8 Channel Digital Output Module
1715-OF8I	8 Channel Analog Output Module
1715-A2A	Adapter Base 2 slot
1715-A3IO	I/O Base 3 Slot
1715-TASIB16D	Termination Assembly – 16 CH DI Simplex
1715-TADIB16D	Termination Assembly – 16 CH DI Duplex
1715-TASOB8DE	Termination Assembly – 8 CH DO Simplex
1715-TADOB8DE	Termination Assembly – 8 CH DO Duplex
1715-TASIF16	Termination Assembly – 16 CH AI Simplex
1715-TADIF16	Termination Assembly – 16 CH AI Duplex
1715-TASOF8	Termination Assembly – 8 CH AO Simplex
1715-TADOF8	Termination Assembly – 8 CH AO Duplex
1715-N2L	Slot Filler Tall
1715-N2S	Slot Filler Short
1715-C2	Backplane Extender Cable. 2M



Listen.Think.Solve. is a registered trademark of Rockwell Automation, Inc.  
EtherNet/IP is a registered trademark of ODVA.  
Trademarks not belonging to Rockwell Automation are property of their respective companies.

**[www.rockwellautomation.com](http://www.rockwellautomation.com)**

---

**Power, Control and Information Solutions Headquarters**

Americas: Rockwell Automation, 1201 South Second Street, Milwaukee, WI 53204-2496 USA, Tel: (1) 414.382.2000, Fax: (1) 414.382.4444

Europe/Middle East/Africa: Rockwell Automation NV, Pegasus Park, De Kleetlaan 12a, 1831 Diegem, Belgium, Tel: (32) 2 663 0600, Fax: (32) 2 663 0640

Asia Pacific: Rockwell Automation, Level 14, Core F, Cyberport 3, 100 Cyberport Road, Hong Kong, Tel: (852) 2887 4788, Fax: (852) 2508 1846